



# American Music Environments

## AME 2020 Installation Guide

**1-888-AME-5005**

## 2 Zone Network Connection



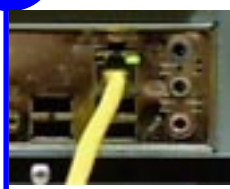
1



First, take the supplied power connector cable and insert it into the AME 2020 as shown in the photo. Following this, you should verify that the black 'rocker' switch (located to the right of the power cable input) is in the upward position also as shown in the photo.

*\*To prevent electrical damage to the AME 2020, please use the provided surge protector included in your AME 2020 package.*

2



Next, insert one end of the supplied network cable into the network input of the AME 2020. Make sure the cable has 'clicked' in securely. Now, insert the other end of the network cable into the appropriate input of your network hub or router. When there is an active network connection to the AME 2020, the network input will illuminate orange when the cable is inserted. If the AME 2020's network input is not illuminated after the system is connected to your network's hub or router, please contact your network provider.

*\*Failure to keep the AME 2020 on-line will eventually result in the system automatically stopping service. The AME 2020 system must communicate to receive software and music updates as well as upload diagnostic information to AME. This information is essential to AME technicians in the event that the AME 2020 stops functioning correctly.*

3



Now, insert the supplied audio cable into the audio outputs of the AME 2020. Be sure to verify that you have connected the correct audio zone to the desired input on your amplifier. Failure to do so may result in music designed for a specific environment being played in an area for which it was unintended.

*\*Note to customers using home stereo receivers as amplifiers:*

*Because the music produced from each 'zone' of the AME 2020 is in mono format (one audio signal), it will be necessary to connect an audio Y-splitter to the end of the cable going into your receiver. This is necessary to provide an audio signal to both inputs of your stereo receiver so that audio plays from all speakers which are connected to it. If not, music will only play on half of the speakers connected to the receiver.*

*(If you are not able to acquire a Y-splitter, one may be ordered from AME)*

### Important Information Regarding Your New AME 2020 System

#### Finding the correct location for your AME 2020

American Music Environments strongly recommends that the AME 2020 be placed in a location that meets the following criteria:

- ✓ within reasonable proximity to an electrical outlet and network connection
- ✓ a height reachable by most people without the use of a ladder or step-stool
- ✓ accessibility to both front and rear sides of system
- ✓ away from ventilation ducts or areas with airborne debris
- ✓ away from extreme temperatures and/or moisture

Following these tips will increase the longevity of your system and reduce the risk of premature system failure.

#### Troubleshooting

Please contact American Music Environments immediately at 1-888-263-5005 if any of the following events occur during the installation process:

- ☎ The AME 2020 arrives physically damaged from shipment
- ☎ Any missing components to the AME 2020 system
- ☎ The machine will not turn on
- ☎ Music not playing even after restarting system

4



After the previous three steps have been completed, the AME 2020 is ready to turn on. To start-up the system, please press and release the power button located to the right of the green light. If done successfully, the green light will illuminate, indicating that system is turned on.

The AME 2020 will not immediately begin to play music. Music begins after the AME 2020 programming has completely loaded. This process usually takes between three to five minutes, so please be patient. If for any reason there is no music playing after more than ten minutes after start-up, please leave the machine running and contact an American Music Environments technician at our toll-free number 1-888-263-5005.





# American Music Environments

## AME 2020 Installation Guide

**1-888-AME-5005**

## 2 Zone Dial-Up

Before beginning installation, please make sure that you have received all of the following components:



### 1 Connect Power Cable

1

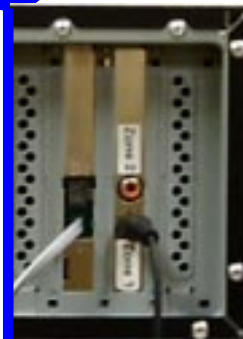


First, take the supplied power connector cable and insert it into the AME 2020 as shown in the photo. Following this, you should verify that the black 'rocker' switch (located to the right of the power cable input) is in the upward position also as shown in the photo.

*\*To prevent electrical damage to the AME 2020, please use the provided surge protector included in your AME 2020 package.*

### 2 Connect Modem

2



Next, insert one end of the supplied phone cord into the modem of the AME 2020. The modem on the AME 2020 has two inputs, one of which is blocked (as shown in photo). Please insert the phone cord into the modem's input which has been left open and make sure it has 'clicked' in securely. Now, insert the other end of the phone cord into the surge protector provided with the AME 2020. This surge protector is packaged with a phone cord as well. That cord should be used to connect the surge protector to the phone jack designated for the AME 2020.

*(Please refer to the instructions provided with the surge protector to ensure that both phone cords are inserted into the appropriate inputs)*

*\*Failure to keep the AME 2020 connected to a phone line will eventually result in the system automatically stopping service. The AME 2020 system must communicate to receive software and music updates as well as upload diagnostic information. This information is essential to AME technicians in the event that the AME 2020 stops functioning correctly.*

### 3 Connect Audio Cable

3



Now, insert the supplied audio cable into the audio outputs of the AME 2020. Be sure to verify that you have connected the correct audio zone to the desired input on your amplifier. Failure to do so may result in music designed for a specific environment being played in an area for which it was unintended.

*\*Note to customers using home stereo receivers as amplifiers:*

*Because the music produced from each 'zone' of the AME 2020 is in mono format (one audio signal), it will be necessary to connect an audio Y-splitter to the end of the cable going into your receiver. This is necessary to provide an audio signal to both inputs of your stereo receiver so that audio plays from all speakers which are connected to it. If not, music will only play on half of the speakers connected to the receiver.*

*(If you are not able to acquire a Y-splitter, one may be ordered from AME)*

### IMPORTANT INFORMATION REGARDING YOUR NEW AME 2020 MUSIC & MARKETING SYSTEM

#### FINDING THE CORRECT LOCATION FOR YOUR AME 2020

American Music Environments strongly recommends that the AME 2020 be placed in a location that meets the following criteria:

- ✓ *Within reasonable proximity to an electrical outlet and telephone jack*
- ✓ *A height reachable by most people without the use of a ladder or step-stool*
- ✓ *Accessibility to both front and rear sides of system*
- ✓ *Away from ventilation ducts or areas with airborne debris\**
- ✓ *Away from extreme temperatures and moisture\**

\*Following these guidelines will increase the longevity of your system and reduce the risk of premature system failure.

#### TROUBLESHOOTING

Please contact American Music Environments immediately at 1-888-263-5005 if any of the following events occur during the installation process:

- ☎ *The AME 2020 arrives physically damaged from shipment*
- ☎ *Any missing components to the AME 2020 system*
- ☎ *The machine will not turn on*
- ☎ *Music not playing even after restarting system*



4

After the previous three steps have been completed, the AME 2020 is ready to turn on. To start-up the system, please press and release the power button located to the right of the green light. If done successfully, the green light will illuminate, indicating that system is turned on.

The AME 2020 will not immediately begin to play music. Music begins after the AME 2020 programming has completely loaded. This process usually takes between three to five minutes, so please be patient. If for any reason there is no music playing after more than ten minutes after start-up, please leave the machine running and contact an American Music Environments technician at our toll-free number 1-888-263-5005.

